



# GPS PHOTO TAGGER

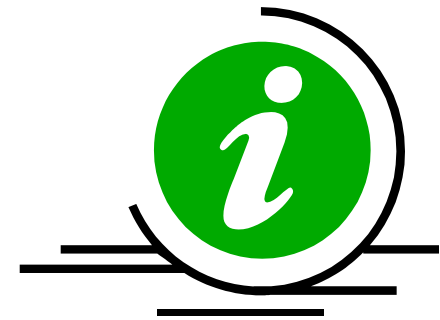
v1.1

## Introduction

- **Share your stories.**

# Agenda

- Easy to use - Finish your story in 3 steps
- Different views to review the trip
- Rich editing functions
- Publish and share your travel
- Other features



# Finish your trip story in 3 steps

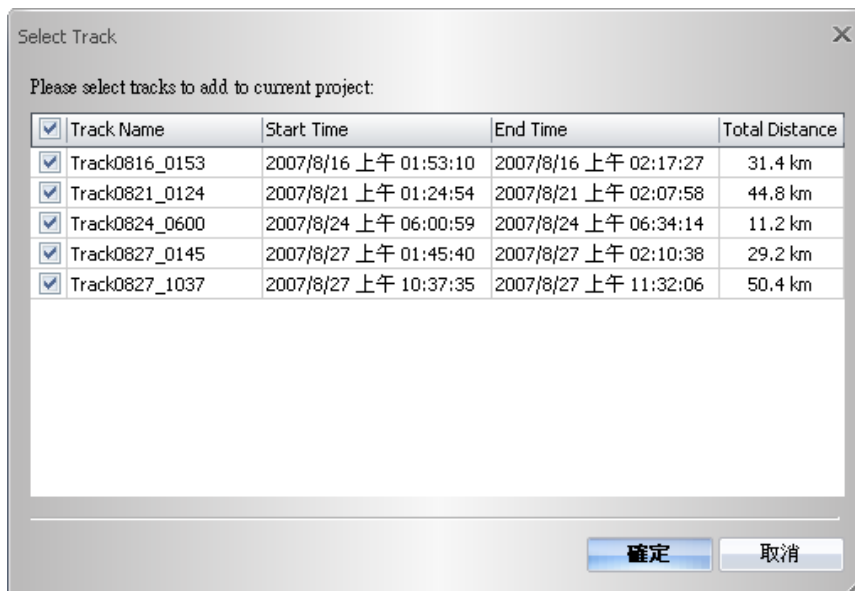
- Step 1: Prepare your data
  - Plug-in your GPS data logger
  - Copy your photos into computer
  - Invoke GPS Photo Tagger



# Finish your trip story in 3 steps

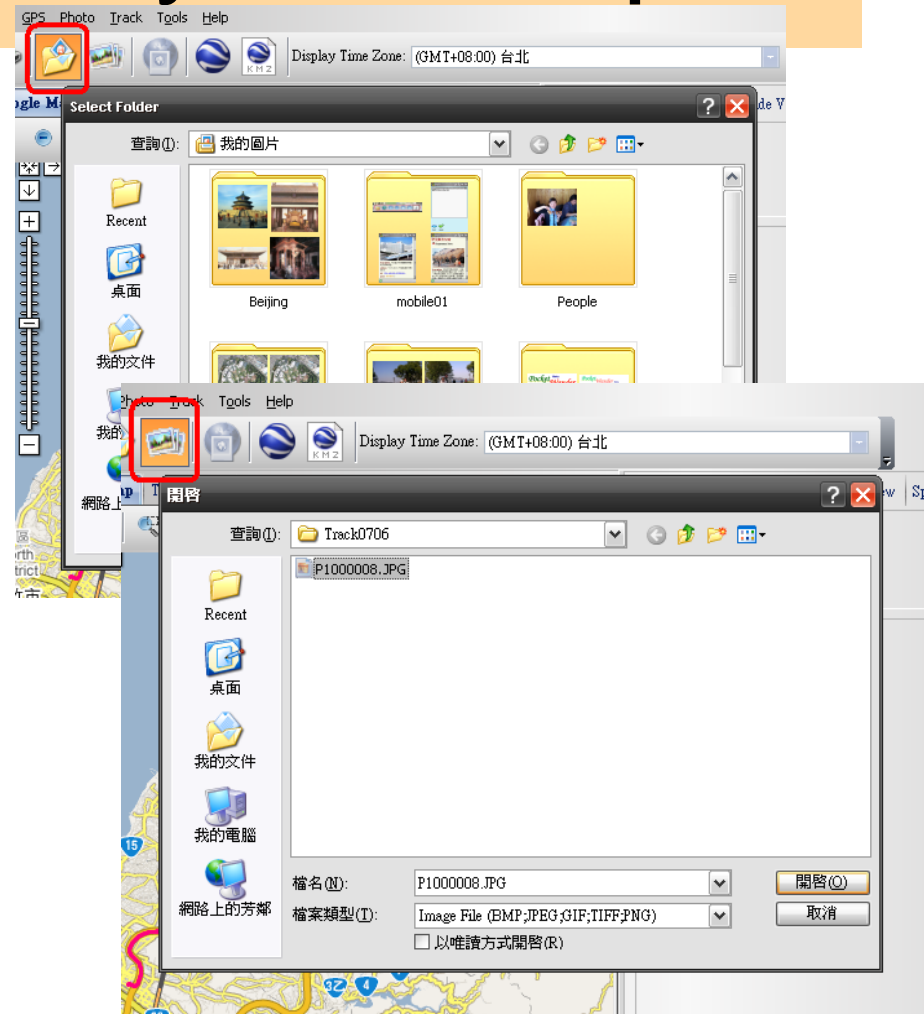
## ■ Step 2: Read GPS Log

- Auto scan device.
- Auto segment the track by time
- Track management



# Finish your trip story in 3 steps

- Step 3: Add your photos.
  - Add photos from folder
  - Add photos from files



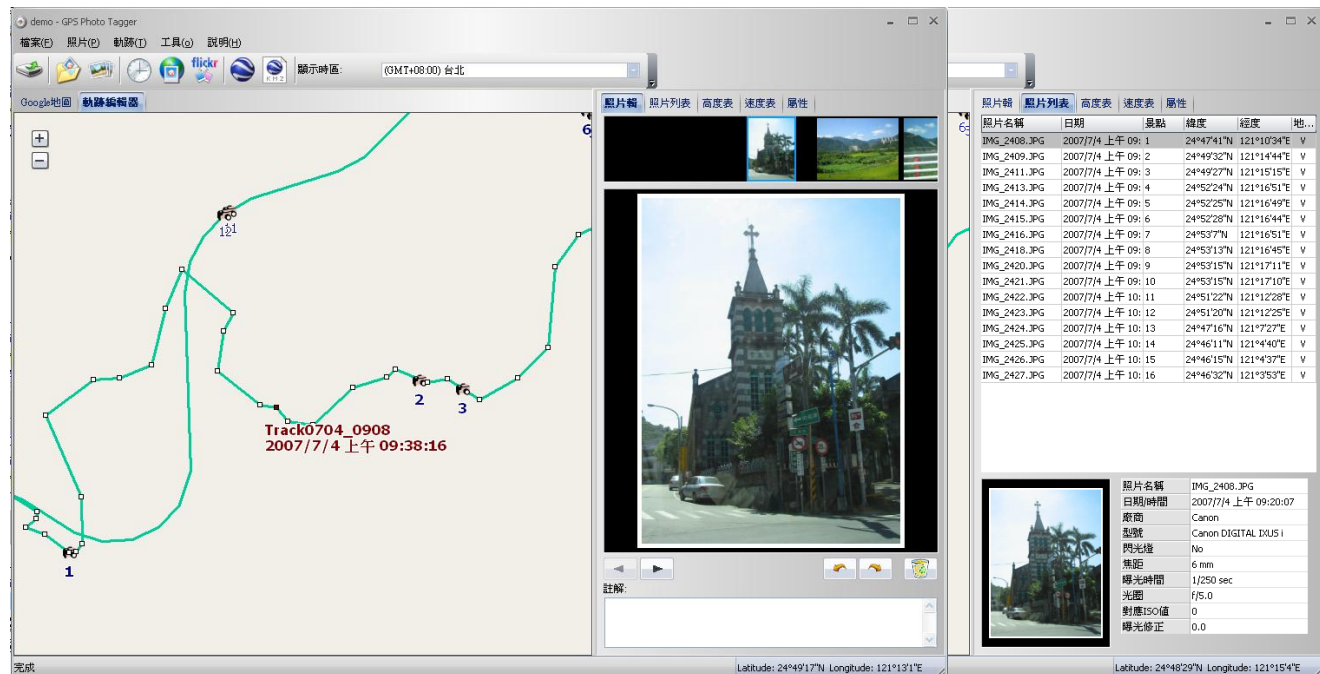
# Different views to review the trip

- Google map
  - Tracks
  - Place marks with photos



# Different views to review the trip

- Photo (List) view
- Track Editor



# Different views to review the trip

## ■ Photo Slide Show





# Different views to review the trip

- Altitude view
- Speed view



Altitude  
Location

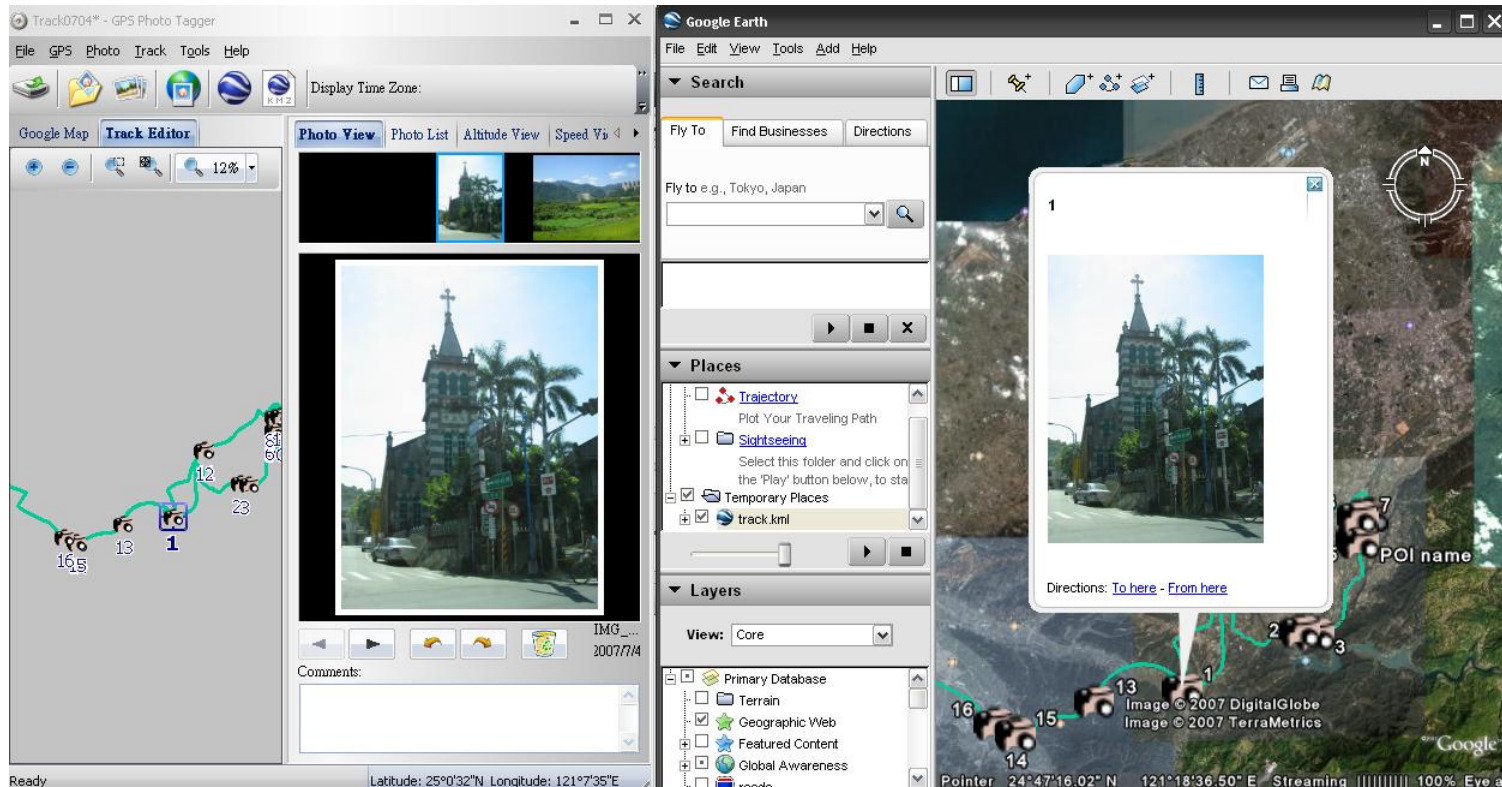


Speed  
Location



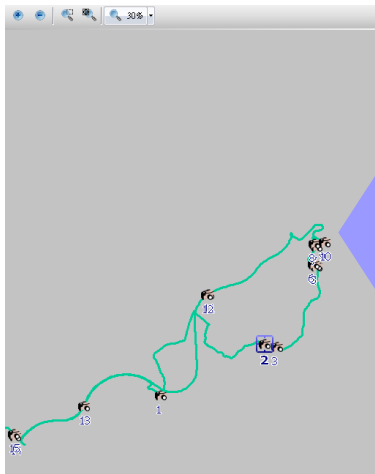
# Different views to review the trip

## ■ View in Google Earth

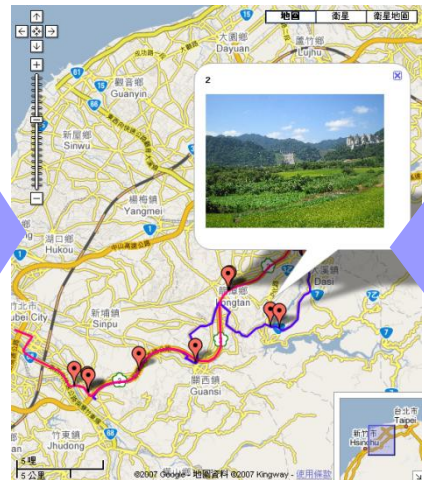


# Different views to review the trip

## ■ Synchronization



Zoom



Selection

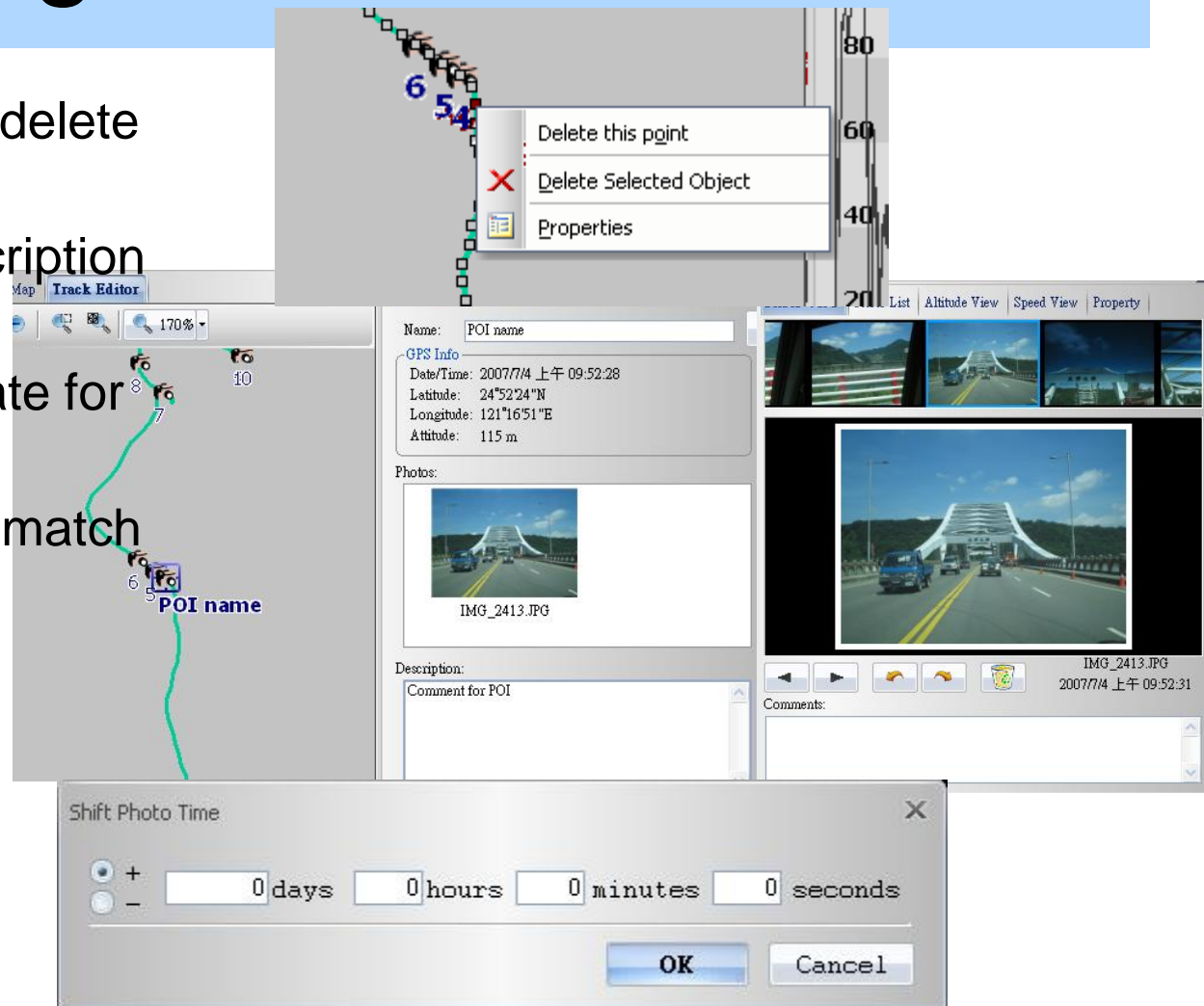


Name	Date	Please Mark	Latitude	Longitude	Geo Tag...
IMG_2400.JPG	2007/7/4 上午 09: 1	-	24°47'41"N	121°10'54"E	-
IMG_2409.JPG	2007/7/4 上午 09: 2	-	24°49'32"N	121°14'44"E	-
IMG_2411.JPG	2007/7/4 上午 09: 3	-	24°49'27"N	121°15'15"E	-
IMG_2413.JPG	2007/7/4 上午 09: 4	-	24°52'29"N	121°16'55"E	-
IMG_2414.JPG	2007/7/4 上午 09: 5	-	24°52'25"N	121°16'42"E	-
IMG_2415.JPG	2007/7/4 上午 09: 6	-	24°52'28"N	121°16'44"E	-
IMG_2416.JPG	2007/7/4 上午 09: 7	-	24°53'7"N	121°16'53"E	-
IMG_2418.JPG	2007/7/4 上午 09: 8	-	24°53'17"N	121°16'45"E	-
IMG_2420.JPG	2007/7/4 上午 09: 9	-	24°53'15"N	121°17'11"E	-
IMG_2421.JPG	2007/7/4 上午 09: 10	-	24°53'15"N	121°17'10"E	-
IMG_2422.JPG	2007/7/4 上午 10: 11	-	24°51'02"N	121°12'09"E	-
IMG_2423.JPG	2007/7/4 上午 10: 12	-	24°51'26"N	121°12'25"E	-
IMG_2424.JPG	2007/7/4 上午 10: 13	-	24°47'16"N	121°7'27"E	-
IMG_2425.JPG	2007/7/4 上午 10: 14	-	24°46'11"N	121°4'49"E	-
IMG_2426.JPG	2007/7/4 上午 10: 15	-	24°46'15"N	121°4'37"E	-
IMG_2427.JPG	2007/7/4 上午 10: 16	-	24°46'32"N	121°3'57"E	-

Photo Name: IMG\_2409.JPG  
 Date/Time: 2007/7/4 上午 09:42:21  
 Make: Canon  
 Model: Canon DIGITAL DLS I  
 Flash Used: No  
 Focal Length: 6 mm  
 Exposure Time: 1/320 sec  
 Aperture: f/8.0  
 ISO Equivalent: 0  
 Exposure Bias: 0.0

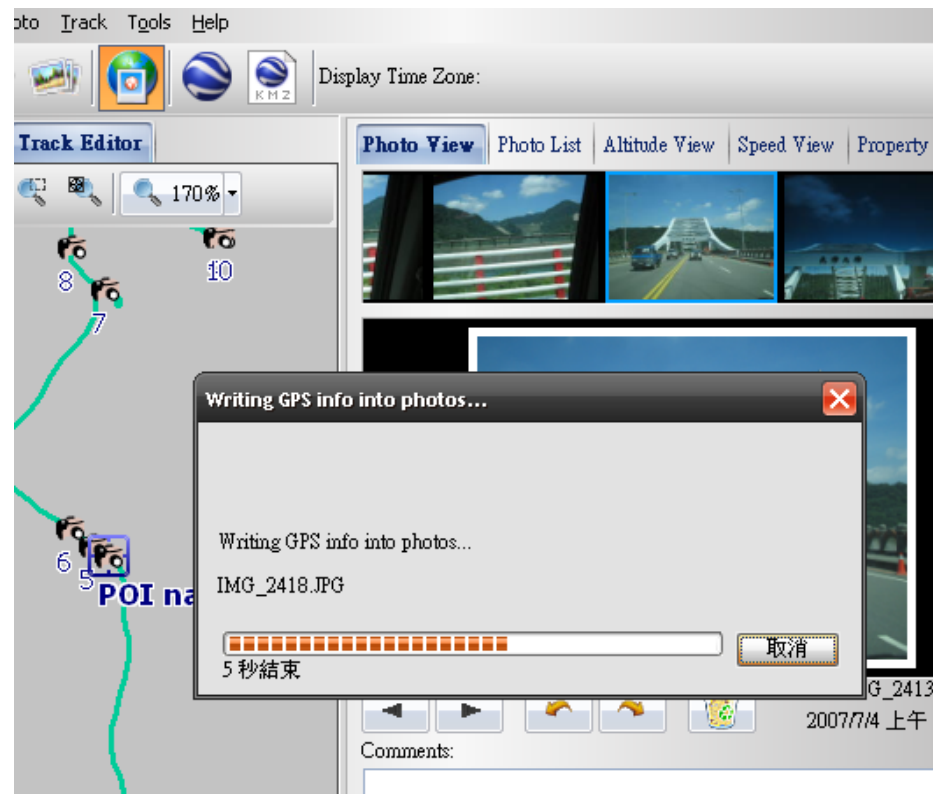
# Rich editing functions

- Easy to move and delete way-point, track.
- Modify name, description for POI
- Add comment, rotate for PHOTO
- Shift photo time to match the way point



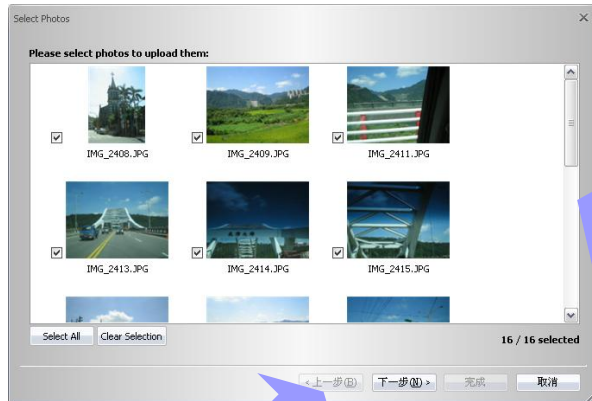
# Publish story

- Write geo-tag into photo

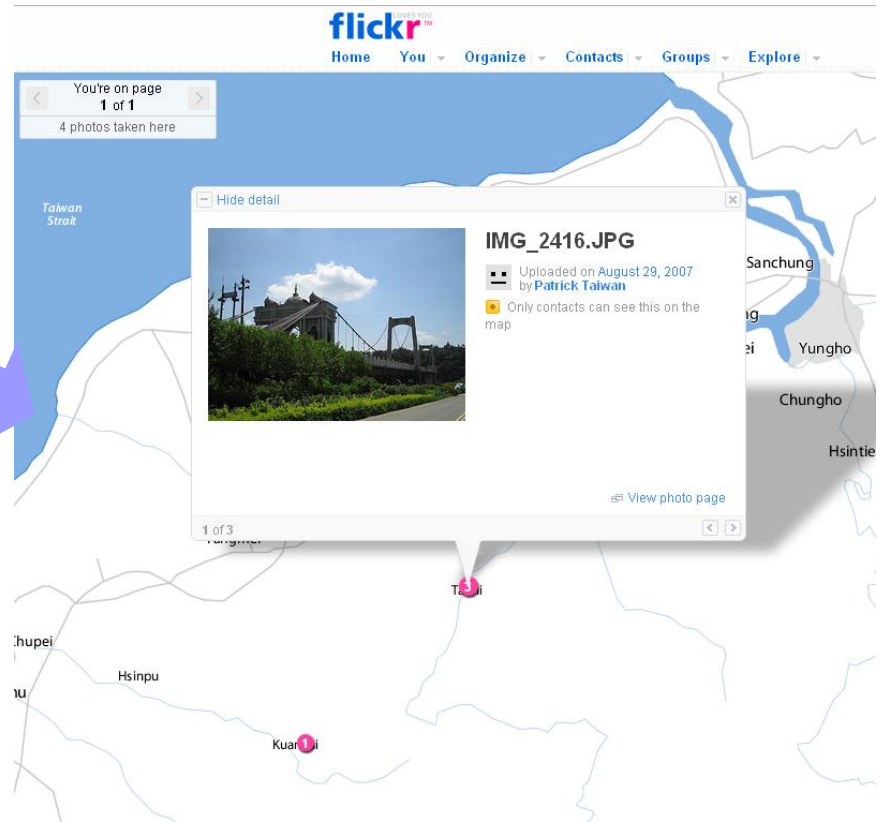


# Publish story

## ■ Upload to flickr



Upload



Options

Title:

Description:

Tags:

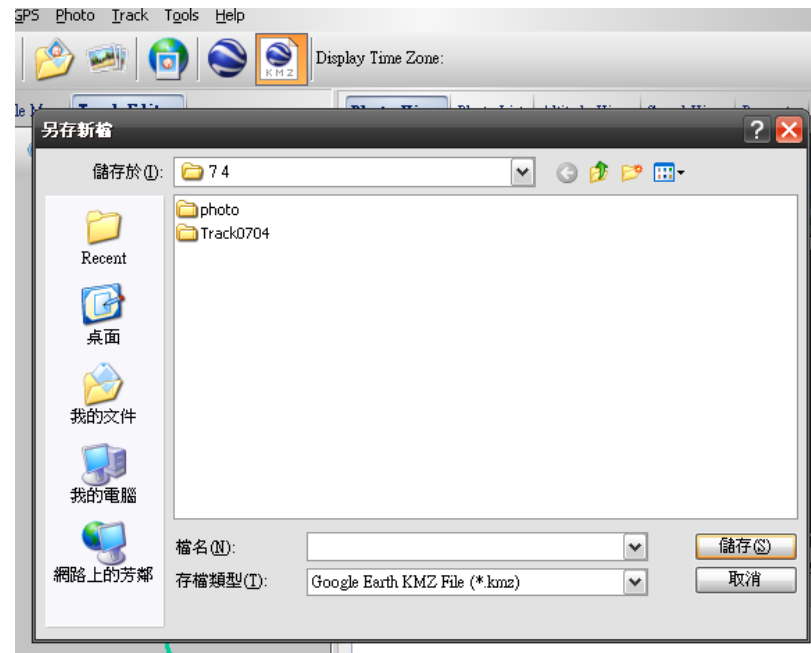
Account Name: Patrick Taiwan

Privacy Setting:  
 Public  
 Private  
 Open for friends  
 Open for family

Adjust Uploaded Photo Sizes: (Max Photo Edge)  
1280 pixels

# Publish story

- Save to project file for management
- Export to KMZ



# Other features

- Multi-language support
  - English
  - Traditional Chinese
  - Simplified Chinese
  - Dutch
  - German
  - French
  - Spanish
  - Italian
  - Russian
- Automatically detect local language





# Other features

- China map support

