



iPoint

version 1.1

Users' Manuals

March 15, 2007

Table of Contents

- Features
 - Open Project
 - New Project
 - Creating Images For Maps
 - Insert Maps
 - Calibrating Maps
 - Add Point-Of-Interests
 - Edit Point-Of-Interests
 - Type Definition
 - Export Project
 - Import Project
 - Sync Project from PC to Pocket PC
 - Project Manager (Pocket PC)
 - Map View (Pocket PC)
 - Switch Map (Pocket PC)
 - Point-Of-Interest Window (Pocket PC)
 - Edit Point-Of-Interest
 - Take Notes
-

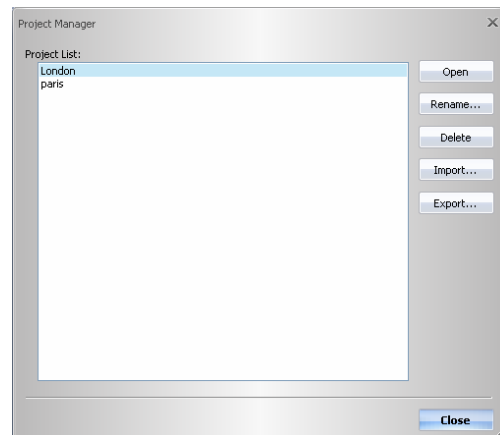
Features

iPoint is a powerful application that help you plan your trip. It comes with PC release (free) and Pocket PC release. You can plan your trip, collect information with PC release and take it with you on Pocket PC. iPoint is a location-based database using any map in image format (.jpeg, .bmp, .png, .gif). Sharing data with others is as easy as a click of a button. iPoint is a fully functional database, where users can define their own categories as well as the attributes of each specific category. Yet iPoint is not simply a database. You can load in multiple maps and mark POI (points of interest) on the maps. Each individual point can have its own specified attributes, such as telephone numbers, addresses, descriptions, attached images, and attached files. In addition to plotting out favorite restaurants and planning your next trip, you can also make a simple neighborhood map, a hiking or cycling path, or even your walking routes. Using any map of any location, you can plot any plan.

- Support different image format (jpg, bmp, png, gif, etc) as map. It can be screenshot, scanned file, or digital photo.
 - Support large map files. No file size limitation and fast map browsing on both PC and Pocket PC.
 - Multiple maps insertion.
 - Map Calibration.
 - Support non-north-oriented maps.
 - Multilingual data input.
 - User defined points of interest icons.
 - Zoom in, zoom out, zoom all, and zoom area (draw a rectangle to zoom in)
 - Show or hide point of interest name.
 - Easily switch between maps Click on attached file will open the file.
 - Attached file can be of any types. It can be pdf file, map3, Word Doc file, Excel file, etc.
 - Import / Export projects to share with others.
 - Take notes for each Point-Of-Interest.
-

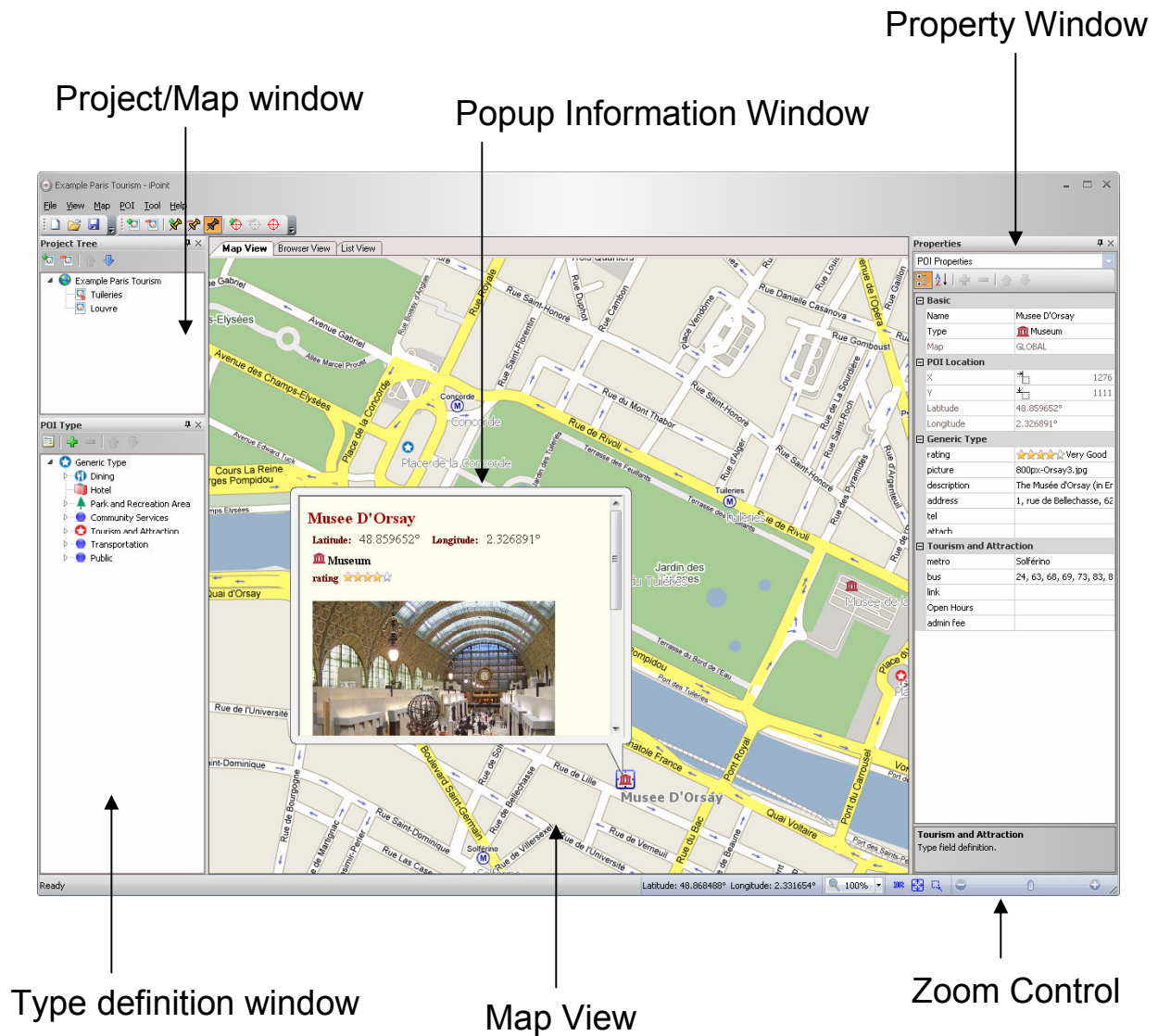
Open Project

- Select “File” → “Open Project” command. All the project in work space will list on the “Project Manager” window.
- Users can manage all the project in the “Project Manager Window”. All the projects are kept in “Workspace”. (Select “Tool” → “Options” to configure the “Workspace” location.)
- Use “Export Project”, “Import Project” to share projects with others.



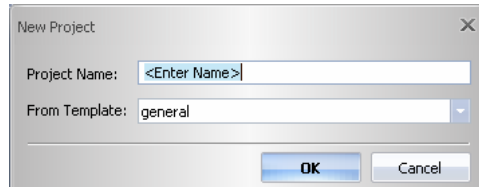
Open Project

Window Overview



New Project

- Select “File” → “New Project...” command will create a new project.

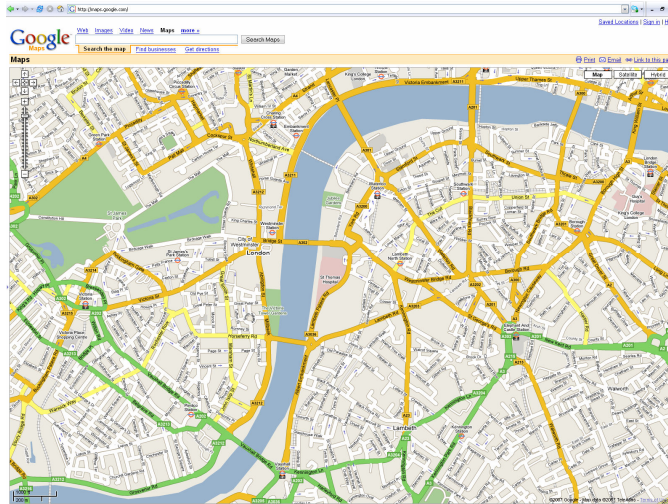


Creating Images for Maps

- Captures from web sites
 - Google map - <http://maps.google.com>
 - Live Search – <http://maps.live.com>
 - MapQuest - <http://www.mapquest.com>
 - Yahoo! Map - <http://maps.yahoo.com>
 - Multimap.com - <http://www.multimap.com>
 - From desktop program
 - Google Earth
 - From printed map
 - Digital camera
 - Scanner
-

Creating Images for Maps

(From the internet)



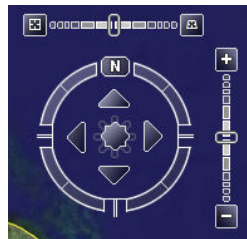
- Zoom to the area.
- View “Full Screen” (key F11).
- Press “Print Screen” key.
- Invoke image editor program like “Paint”.
- Select “Edit” → “Paste” (Ctrl-V) command.
- Edit and save as image file (jpeg, png, bmp, tiff).



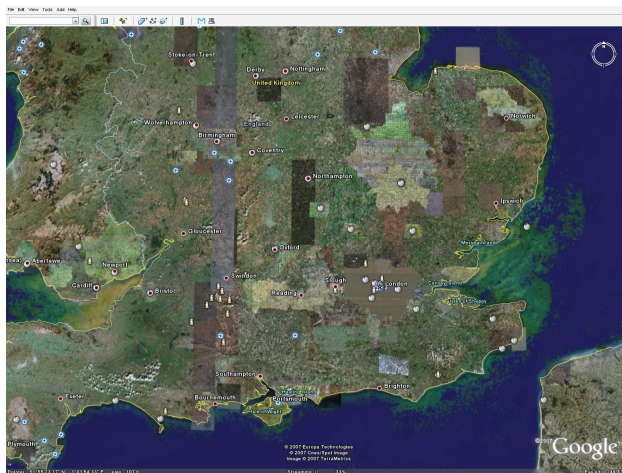
Creating Images for Maps

(from Google Earth)

- Download at <http://earth.google.com/download-earth.html>
- Zoom to the area.
- Press button “N” to orient map to north.

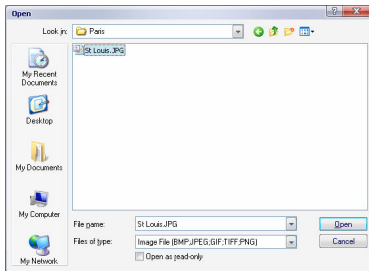


- Select “View” → “Fullscreen” command (or F11 key).
- Select “File” → “Save” → “Save Image...” command.

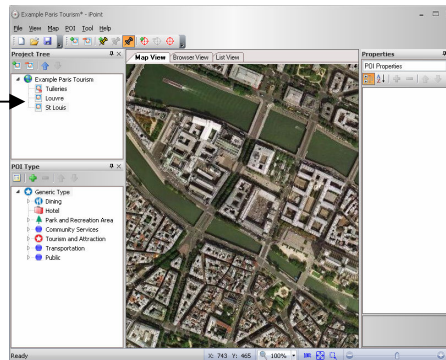


Insert Maps

- Select “Map” → “Insert Map”
- Select an image file.
- The new map will list in project window.



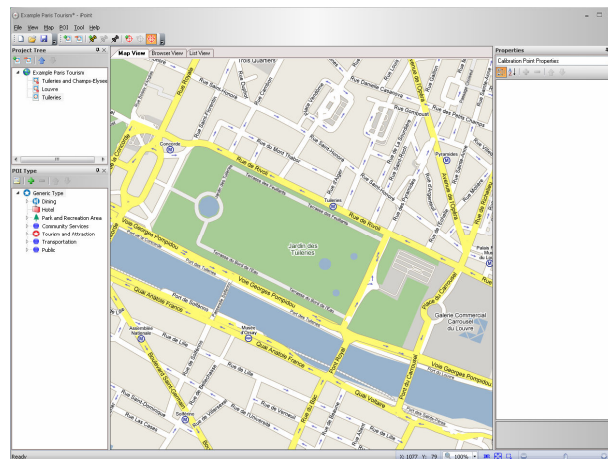
New Added Map



Calibrating Maps

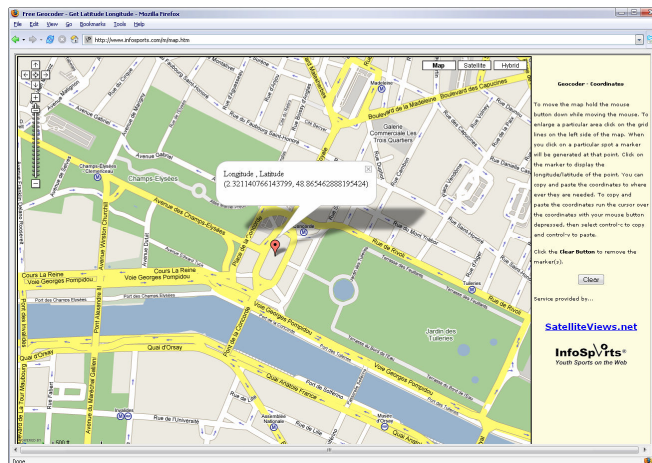
- To calibrate a map, you should add at least 2 calibration points.
- iPoint support non-north oriented maps.
- Calibration points should be as far from each other as possible.
- Users can still add/edit Point-Of-Interests on non-calibrated maps. Some features will be disabled on non-calibrated maps.

- Insert Map into iPoint. Select “Map” → “Insert Map...” command

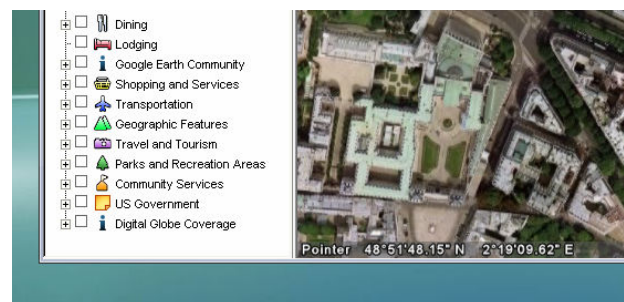


Calibrating Maps

- Locate the latitudes and longitudes on web sites
 - <http://www.gorissen.info/Pierre/maps/googleMapLocationv3.php>
 - <http://www.infosports.com/m/map.htm>

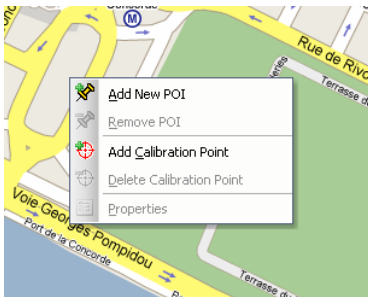


- Locate the latitudes and longitudes with Google Earth. You can find the latitude and longitude on the left-bottom corner of Google Earth.



Calibrating Maps

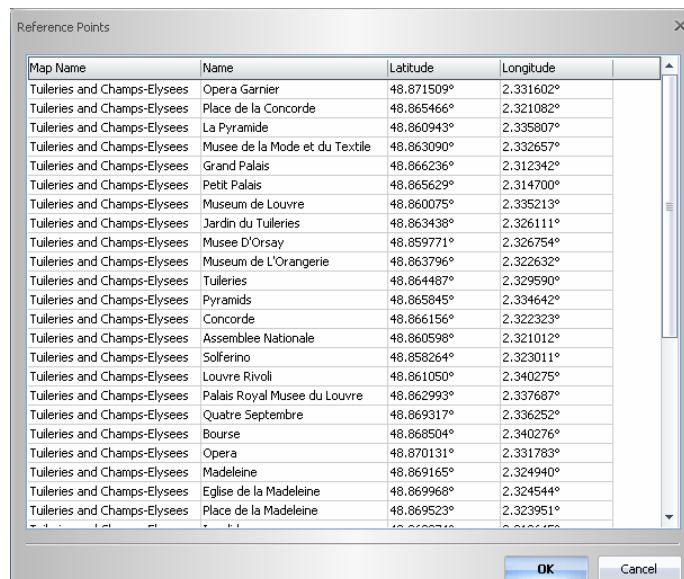
- Click mouse right button on a point. Select “Add Calibration Point” command.
- Fill the point’s latitude and longitude.
- iPoint accepts format like “48.865477” “48 51 55.7” “48.865477N”

A screenshot of a dialog box titled 'Calibration Point'. The dialog has a close button (X) in the top right corner. It contains the following fields and controls:

- Name: Center of Place de la Concorde
- Physical Location section:
 - Latitude: 48.865477
 - Longitude: 2.321098
 - Browse... button
- Image Location section:
 - X-coord: 470
 - Y-coord: 312
- OK and Cancel buttons at the bottom.

Calibrating Maps


- Click “Browse” button to use the Latitude and Longitude values of the Point-Of-Interest on other maps.

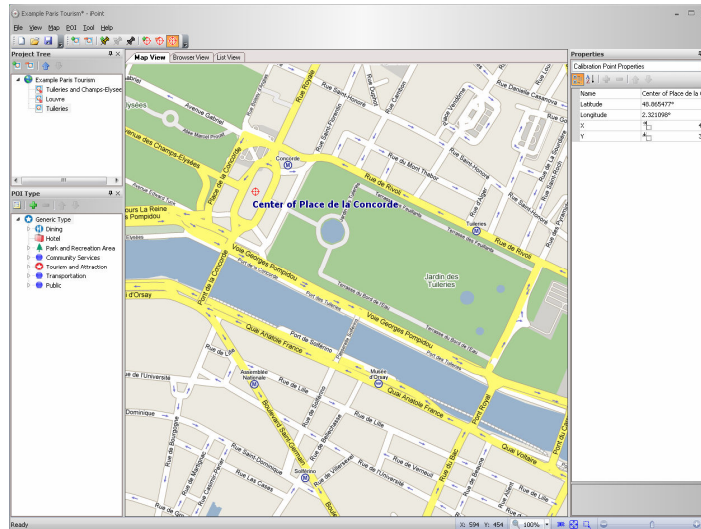


The screenshot shows a dialog box titled "Reference Points" with a close button (X) in the top right corner. It contains a table with four columns: "Map Name", "Name", "Latitude", and "Longitude". The table lists various landmarks in Paris, such as the Opera Garnier, Place de la Concorde, and the Louvre, along with their respective coordinates. At the bottom of the dialog, there are "OK" and "Cancel" buttons.

Map Name	Name	Latitude	Longitude
Tuileries and Champs-Elysees	Opera Garnier	48.871509°	2.331602°
Tuileries and Champs-Elysees	Place de la Concorde	48.865466°	2.321082°
Tuileries and Champs-Elysees	La Pyramide	48.860943°	2.335807°
Tuileries and Champs-Elysees	Musee de la Mode et du Textile	48.863090°	2.332657°
Tuileries and Champs-Elysees	Grand Palais	48.866236°	2.312342°
Tuileries and Champs-Elysees	Petit Palais	48.865629°	2.314700°
Tuileries and Champs-Elysees	Museum de Louvre	48.860075°	2.335213°
Tuileries and Champs-Elysees	Jardin du Tuileries	48.863438°	2.326111°
Tuileries and Champs-Elysees	Musee D'Orsay	48.859771°	2.326754°
Tuileries and Champs-Elysees	Museum de L'Orangerie	48.863796°	2.322632°
Tuileries and Champs-Elysees	Tuileries	48.864487°	2.329590°
Tuileries and Champs-Elysees	Pyramids	48.865845°	2.334642°
Tuileries and Champs-Elysees	Concorde	48.866156°	2.322323°
Tuileries and Champs-Elysees	Assemblee Nationale	48.860598°	2.321012°
Tuileries and Champs-Elysees	Solferino	48.858264°	2.323011°
Tuileries and Champs-Elysees	Louvre Rivoli	48.861050°	2.340275°
Tuileries and Champs-Elysees	Palais Royal Musee du Louvre	48.862993°	2.337687°
Tuileries and Champs-Elysees	Quatre Septembre	48.869317°	2.336252°
Tuileries and Champs-Elysees	Bourse	48.868504°	2.340276°
Tuileries and Champs-Elysees	Opera	48.870131°	2.331783°
Tuileries and Champs-Elysees	Madeleine	48.869165°	2.324940°
Tuileries and Champs-Elysees	Eglise de la Madeleine	48.869968°	2.324544°
Tuileries and Champs-Elysees	Place de la Madeleine	48.869523°	2.323951°

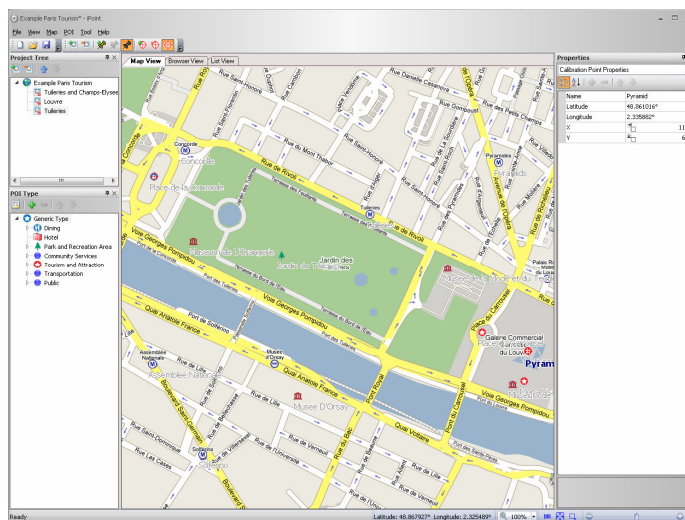
Calibrating Maps

- Calibrating points will show on map with icon 



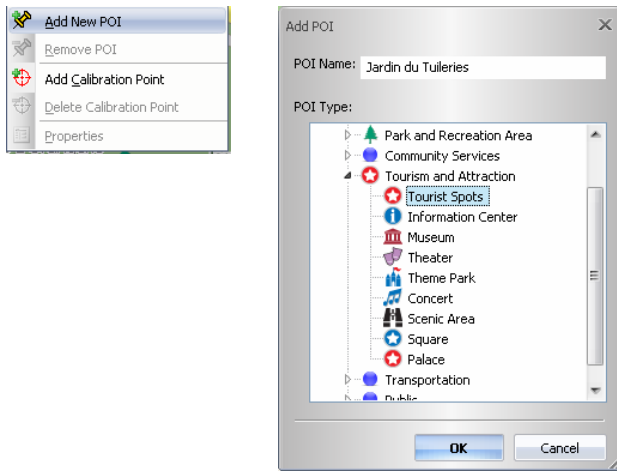
Calibrating Maps

- If 2 (or more) calibration points are added, the map is calibrated. The Point-Of-Interests on the other maps will also show on this calibrated map if these two maps are overlapped.



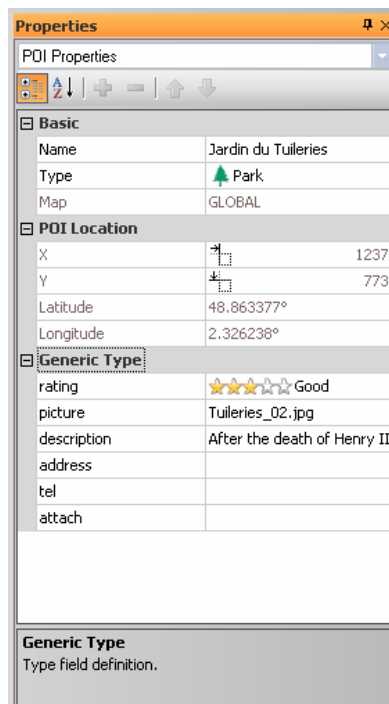
Add Point-Of-Interests

- Click Right mouse button on map, select “Add New POI” command.
- Fill POI Name, select the POI type.



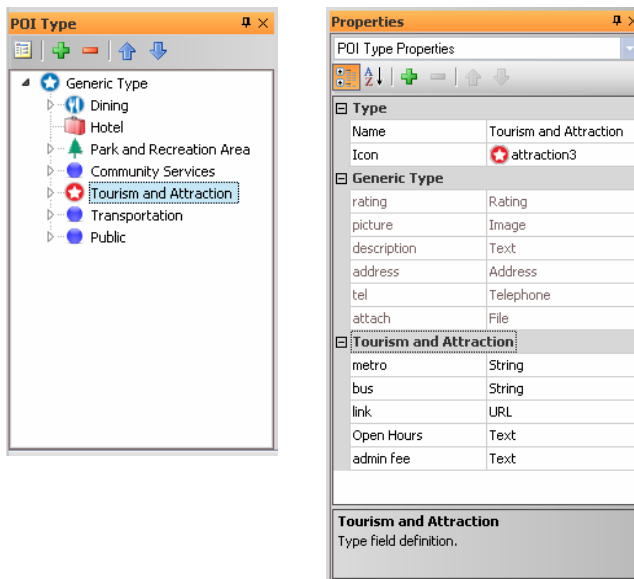
Edit Point-Of-Interests

- Select the Point-Of-Interests, then edit the contents in the “Property Window”. The fields of the POI are defined in the Type definition window.



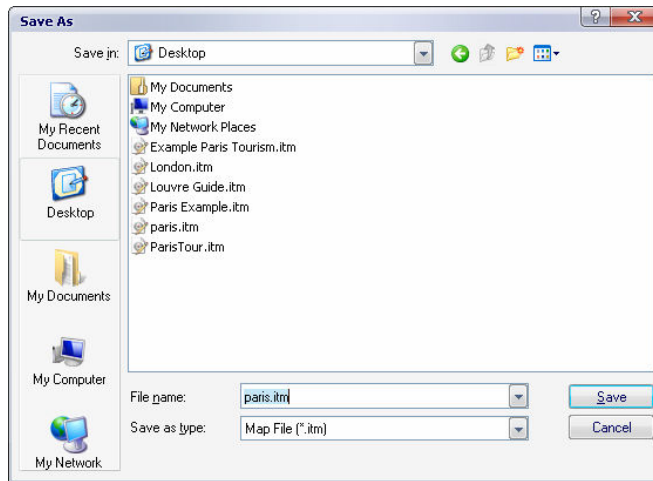
Type definition

- Type definitions
 - Hierarchical type definition tree.
 - A type is defined by the following:
 - Name – type name
 - Icon – a 16x16 image. It will show on the map to represent the POI of this type.
 - Fields – To store the information. The POI of the type will contain the fields.
 - Parent Type – All the fields of the parent types will be inherited.
 - Select a type on “Type Window”, then edit the field in “Property Window”. The fields of parent type will also show on the “Property Window”, but users have to select the parent type to edit those fields.



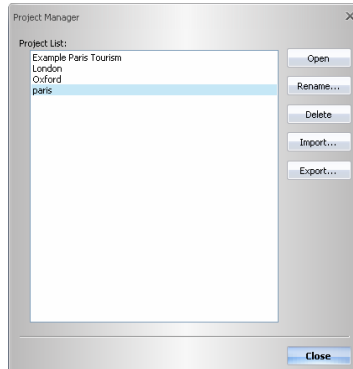
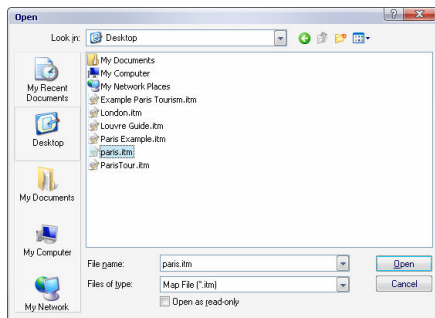
Export Project

- Select “File” → “Export Project...” command to export current project to a .itm file.



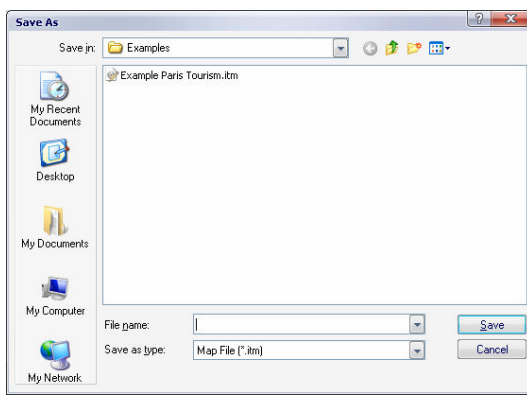
Import Project

- Select “File” → “Import Project...” command.
- Select an itm file.
- The project will be added into “Project Manager Window”.
- Select “Open” to open the project.



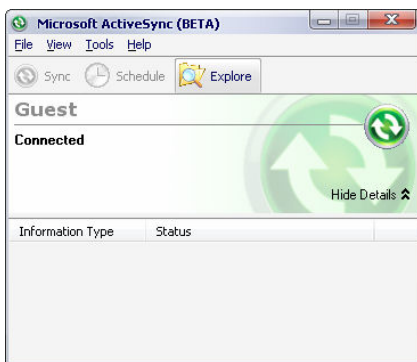
Sync Project From PC to Pocket PC

- Step 1 Export Project
 - Select “File” → “Export Project...” command.

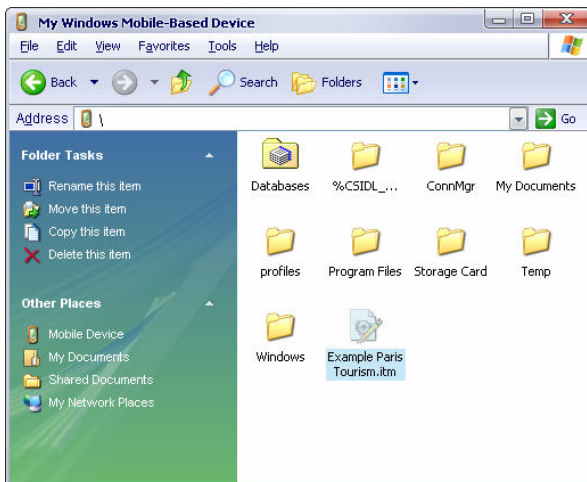


Sync Project From PC to Pocket PC

- Step 2 – Copy itm file to Pocket PC
 - Connect Pocket PC with your PC, click on the “Explore” button of Active Sync.
 - Copy the itm file to your Pocket PC. You can put it in any directory, including the external memory card.

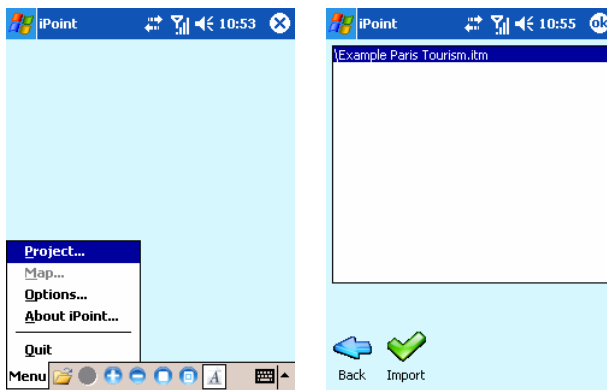


Another way to copy the itm file to your Pocket PC is to use memory card reader to copy the itm file to your Pocket PC external memory card.



Sync Project From PC to Pocket PC

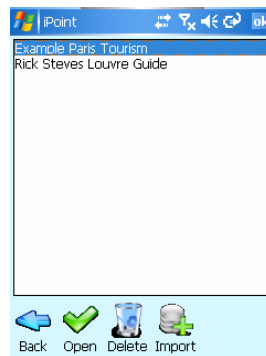
- Step 3 – Import Project on Pocket PC
 - Run iPoint Pocket PC version
 - Select “Menu” → “Project” command
 - Select “Import” command
 - The import project window will list all itm files on your Device, select the itm file and select “Import” button.



Project Manager

Pocket PC

- Select “Menu” → “Project” command to open “Project Manager”.
- Users can “Open” a project, “Delete” a project, or “Import” a project from .itm file.



Map View

Pocket PC

Navigation Window



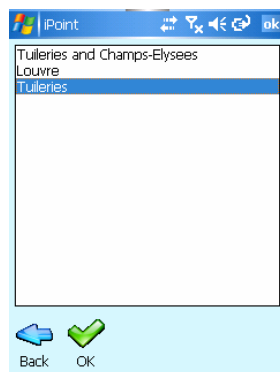
Selected POI
(Point-Of-Interest)

- Project Manager
- Switch Maps
- Zoom In
- Zoom Out
- Fit to Window
- Zoom Area
- Show / Hide Label

Switch Maps

Pocket PC

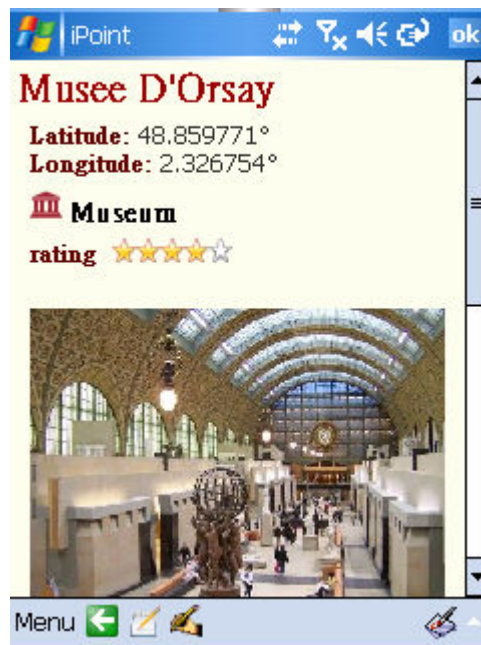
- Select “Menu” → “Map” command.
- All the maps will list on the window.
- Select one of them, click “OK” button to view.



Point-Of-Interest Window

Pocket PC

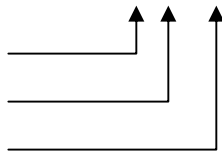
- Click on Point-Of-Interest will invoke Point-Of-Interest window.



Close Window

Edit

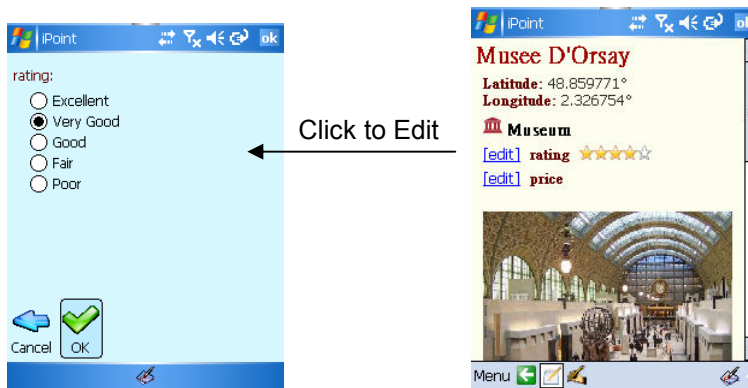
Take Note



Edit Point-Of-Interest

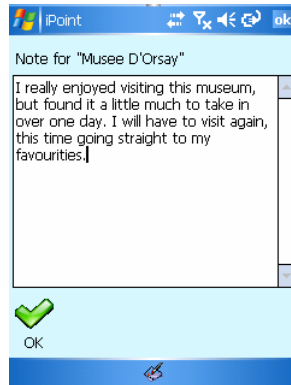
Pocket PC

- Select “menu” → “Edit” command.
- Click on “edit” to edit the field.



Take Notes

- Click on the icon 
- The Note will show in the last field of the Point-Of-Interest Window.



Select "menu" →
"Note Summary" on
Map View Window
will invoke Note Summary
Window.

